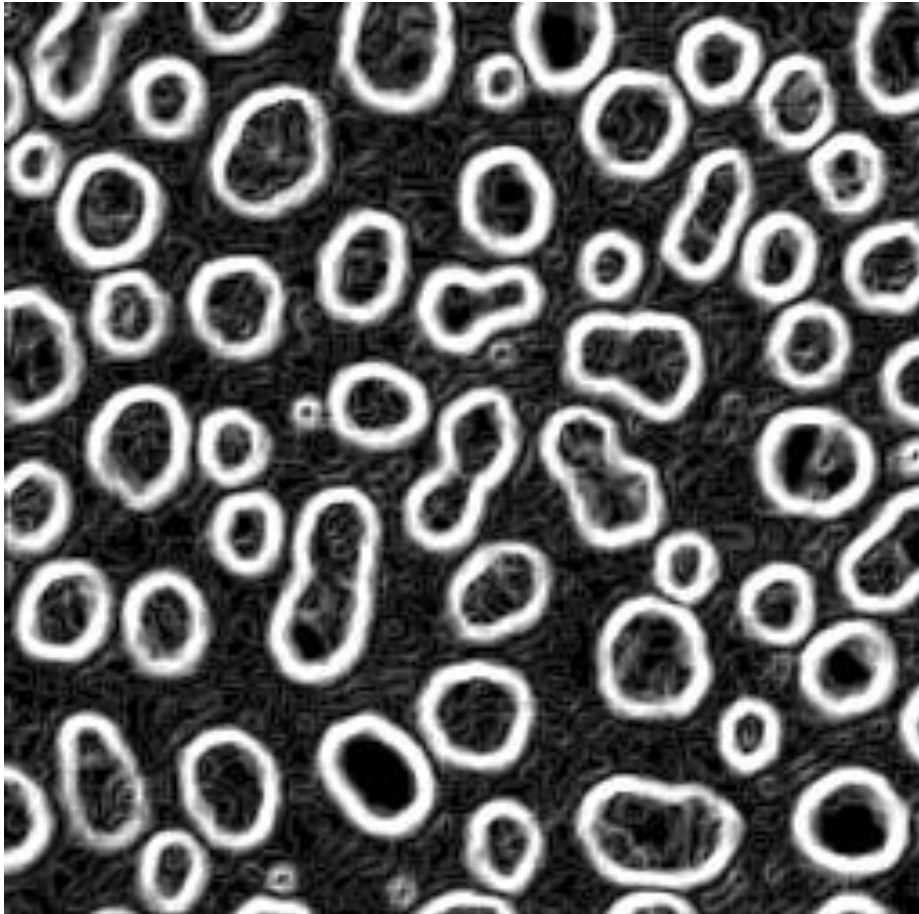


IMAGE PROCESSING PHD COURSE PROGRAMME

MONDAY 22ND OF JUNE 2015 – FRIDAY 26TH OF JUNE 2015



Teachers

Christian Tischer (CT), Advance Light Microscopy Facility, EMBL

Simon F. Nørrelykke (SN), Image and Data Analysis Unit, ETH Zurich

Szymon Stoma (SST), Image and Data Analysis Unit, ETH Zurich

UNIVERSITY OF COPENHAGEN
DEPARTMENT OF BIOMEDICAL SCIENCES



Monday 22nd of June

09:00 – 10:15	Welcome and Introduction Overview on digital image processing and analysis	SFN + CT
10:15	Coffee	
10:30 – 12:00	FIJI – Installation, interface, image inspection	CT
12:00 – 13:00	Lunch	
13:00 – 14:30	FIJI	CT
14:30- 14:45	Presentation - Mikkel Morsing	Coffee
14:45 -15:00	Presentation – Özgun Özer	
15:00 – 15:15	Presentation – Victoria Alexandra Bjerregaard	
15:15 – 16:30	FIJI	CT

Tuesday 23th of June

09:00 – 10:15	FIJI	CT
10:15 - 10:30	Coffee	
10:30 – 12:00	FIJI	CT
12:00 – 13:00	Lunch	
13:00 – 14:30	FIJI - Supervised Learning	CT
14:30- 14:45	Presentation – Atul Anand	Coffee
14:45 -15:00	Presentation – Anne Poder Andersen	
15:00 – 15:15	Presentation – Marina Maria Bento Aryres Pereira	
15:15 – 16:30	FIJI 3-D measurements	CT

Wednesday 24th of June

09:00 – 10:15	FIJI - Macros	SST
10:15	Coffee	
10:30 – 12:00	FIJI - Macros	SST
12:00 – 13:00	Lunch	
13:00 – 14:30	FIJI - Macros	SST
14:30- 14:45	Presentation – Mikkel Rathsach Andersen	Coffee
14:45 -15:00	Presentation – Viktor Karlovich Lund	
15:00 – 15:15	Presentation – Sofie Sylvest Nielsen	
14:35 – 16:00	FIJI – Macros	SST
16:30 - ??	Beers/Wine/beverage at St Hanks Torv (hopefully in the SUN)	

Thursday 25th of June

09:00 – 10:15	Image analysis theory	SFN
10:15	Coffee	
10:30 – 12:00	Cell Profiler	SST
12:00 – 13:00	Lunch	
13:00 – 14:30	CellProfiler	SST
14:30- 14:45	Presentation – Wei Wu	Coffee
14:45 -15:00	Presentation – Andreas Højberg Rasmussen	
15:00 – 15:15	Presentation – Henrik Klingberg	
15:15 – 16:30	Cell Profiler	SST

Friday 26th of June

09:00 – 10:15	User projects: defining objectives, workgroups	SFN and SST
10:15 – 10:30	Coffee	
10:35 – 12:00	Individual projects	SFN and SST
12:00 – 13:00	Lunch	
13:00 – 14:30	Individual projects / Plotly - Making figures and movies for papers & presentations	SST
14:30 – 14:45	Coffee	
14:45 – 16:30	Summary of the Course Feedback from students Discussion and final words	